



Quezon City 2016 Greenhouse Gas (GHG) Inventory

October 06, 2021

CoCO2 Workshop



Quezon City Location Map



PHILIPPINES



METRO MANILA

1. Largest City in Metropolitan Manila

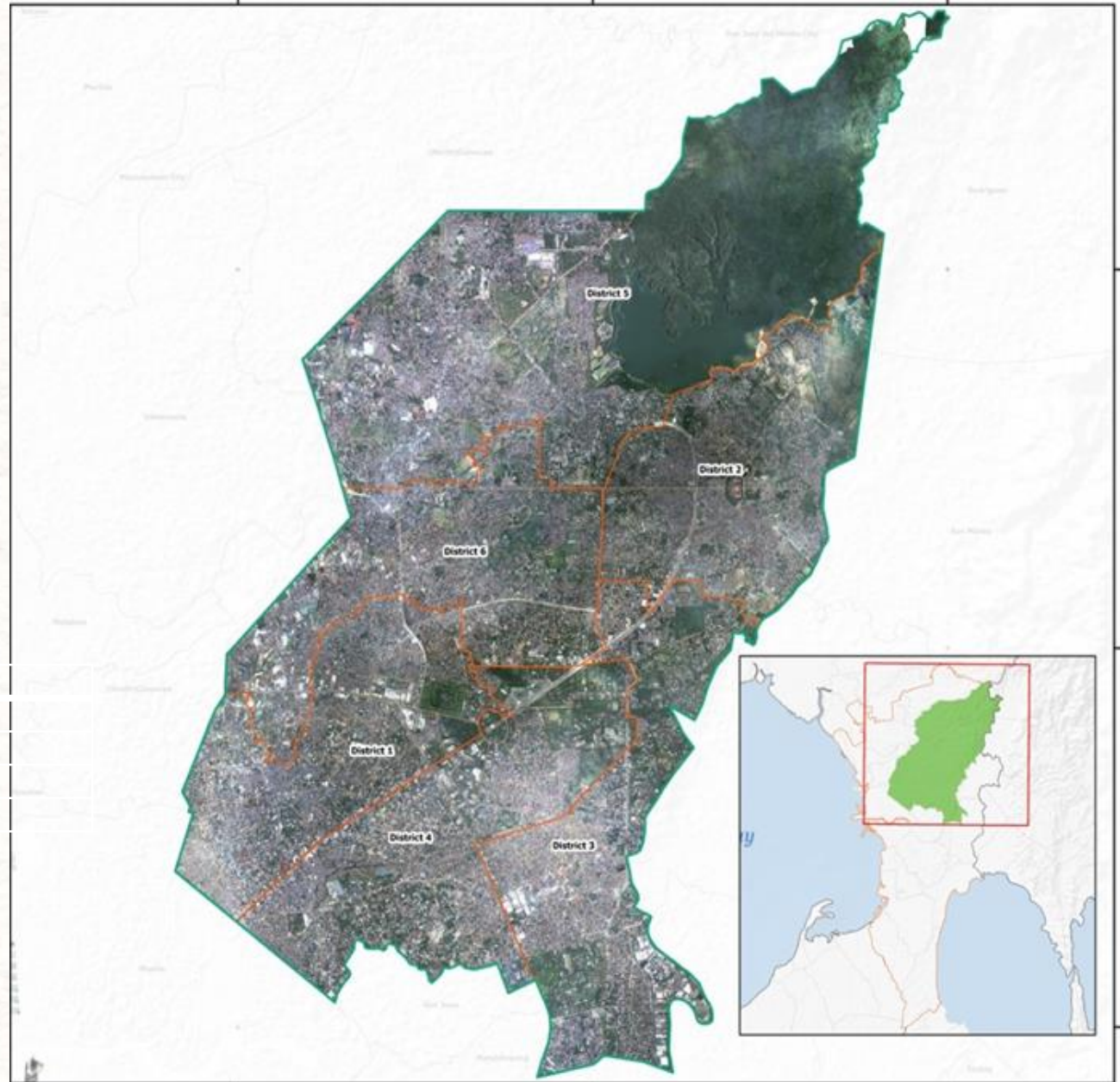
Founded	1939
Population Size	3,148,951 (2021 projected)
Land Area	16,112.58 hectares
Congressional Districts	6
Barangays (Sub-Local Government Units)	142

2. Landscape

The City is largely rolling with alternating ridges and lowlands. Landscape is of mixed-use development in certain areas to allow residential, commercial and industrial activities to mesh together in a relatively compact area.

3. Largest Number of Registered Business

With more than 70,000 registered business establishments



About Quezon City



HEALTH
WELLNESS

As the former capital of the Philippines, the City houses several national government agencies and various specialized and world class hospitals such as the Philippine Heart Center, St. Luke's Medical Center and the National Kidney and Transplant Institute, to name a few.



EDUCATION

Home of the biggest and most prestigious educational institutions in the country: University of the Philippines, Ateneo de Manila University and Miriam College. Most number of educational facilities.



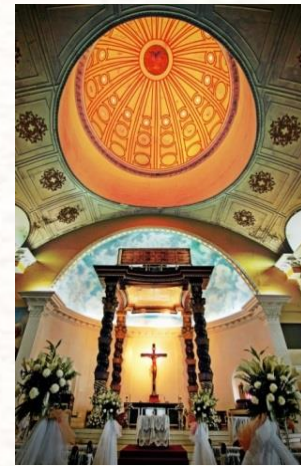
INFORMATION
COMMUNICATION
TECHNOLOGY

Located in-City 11 TV networks, 11 radio stations and more than 30 information and communication technology parks and buildings.



GREEN COVER

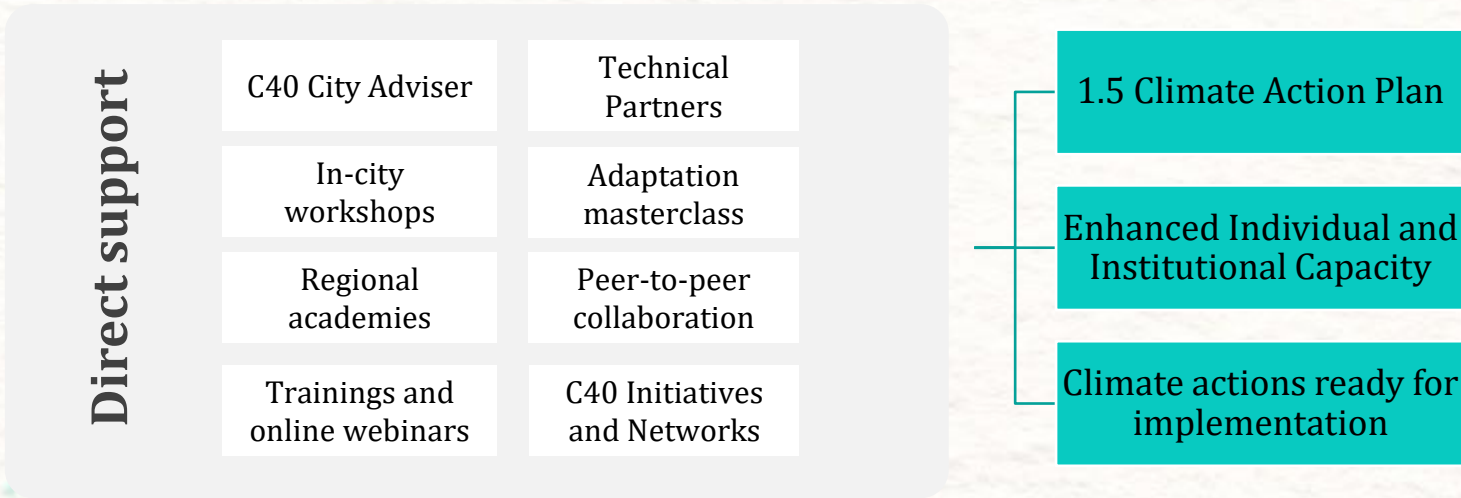
Most extensive expanse of open spaces, parks and greenery in Metro Manila: La Mesa Reservoir, Quezon Memorial Circle, Ninoy Aquino Parks and Wildlife



GREENHOUSE GAS INVENTORY

Quezon City completed the city-wide 2016 inventory of its Greenhouse Gas (GHG) emissions in line with its global commitment to deliver transformative climate actions consistent with the ambitions of the Paris Agreement.

C40 Climate Action Planning (CAP) Programme



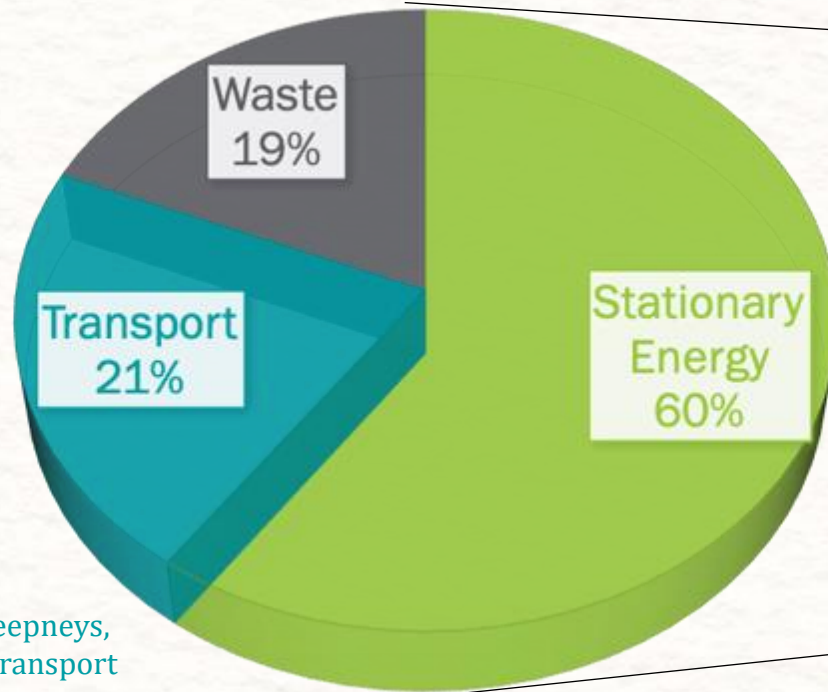
Quezon City's 2016 GHG Inventory Profile

Waste main sources:

- Per capita waste generation of .88 kgs /person /day
- Food waste (landfill): 43% of total waste
- Paper waste (landfill): 18% of total waste
- Yard waste (landfill): 9% of total waste
- Wastewater: 5.8 % of total city emissions

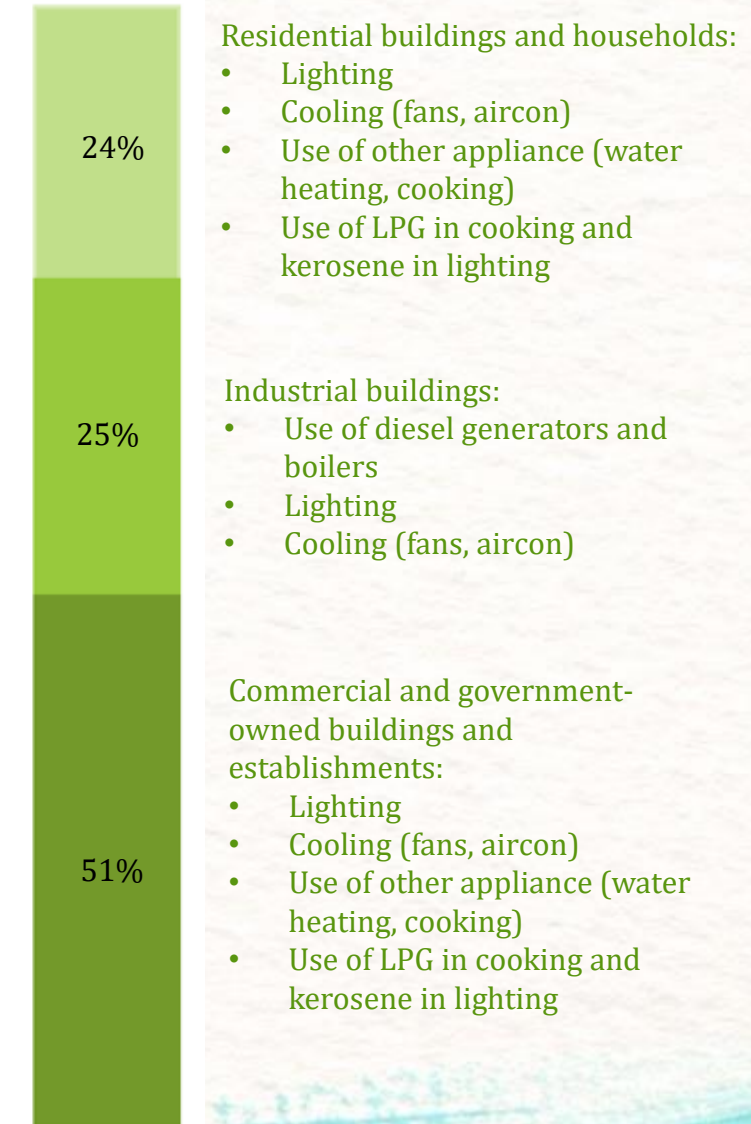
Transport main sources:

- Diesel consumption in jeepneys, buses and other public transport
- Motor gasoline (petrol) consumption in private automobile
- Motor gasoline (petrol) consumption in tricycles



Energy main sources:

- High electricity consumption or demand powered by coal power plants
- Low energy efficiency of appliances for cooling, lighting, and heating



Residential buildings and households:

- Lighting
- Cooling (fans, aircon)
- Use of other appliance (water heating, cooking)
- Use of LPG in cooking and kerosene in lighting

Industrial buildings:

- Use of diesel generators and boilers
- Lighting
- Cooling (fans, aircon)

Commercial and government-owned buildings and establishments:

- Lighting
- Cooling (fans, aircon)
- Use of other appliance (water heating, cooking)
- Use of LPG in cooking and kerosene in lighting

Key Emission Sources



Energy



Transport



Waste



Greenhouse Gas (GHG) Inventory Management Plan

- Stage 1: Project Planning
- Stage 2: Define the scope of inventory
- Stage 3: Data Collection and processing
- Stage 4: Calculating, synthesizing and reviewing results
- Stage 5: Reporting and communication
- Stage 6: Documentation



Quezon City, Philippines

Greenhouse Gas Inventory Management Plan

Version 1.0

This document was developed following completion of the 2016 greenhouse gas inventory. It serves as the basis for developing future inventories.

Developed in partnership with C40 Cities Climate Leadership Group.



MAIN CHALLENGES

- Collection/gathering of data from the identified partners and stakeholders
- Some data sources are not specific/disaggregated for the City



Thank you for your time and
attention!



Quezon City Government

www.quezoncity.gov.ph

Tel. No.: +63 2 8988-4242



Environmental Protection and Waste Management Department

Email: EPWMD@quezoncity.gov.ph

Tel. No.: 8988-4242 local 8349